

Convegno Annuale AISIS

eHealth 2020

Machine Learning:
**Introduzione generale e possibili applicazioni nel
settore Sanità.**

Claudio Alfieri
Associate Partner – *Machine Learning Reply*

Cagliari, 13 e 14 ottobre 2016
THotel

Agenda



- Reply Group
- Machine Learning
- Applications
- Healthcare

Agenda

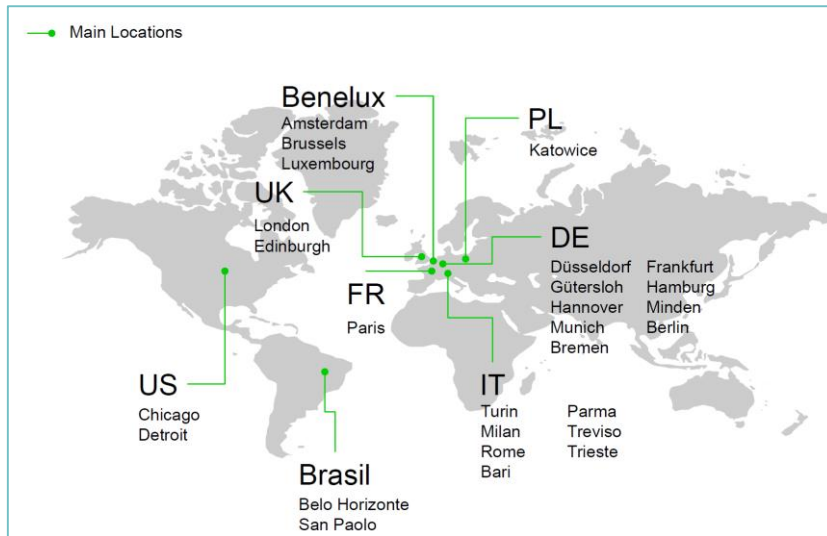


- **Reply Group**
- Machine Learning
- Applications
- Healthcare

Reply **GROUP**



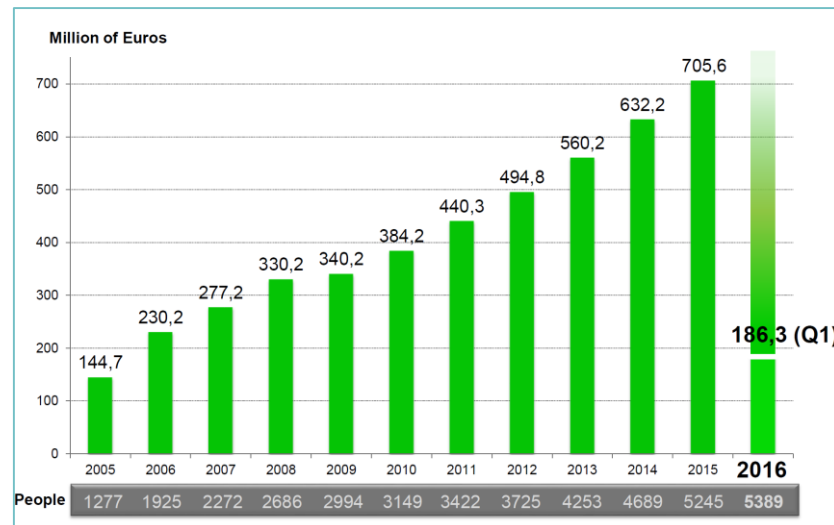
To excel in helping our customers exploiting relevant innovation brought about by economic changes and driven by internet technologies



**Reply
Group**

KEY FACTS

- Founded in 1996 to achieve excellence within the internet consulting market, **Reply** is today a **leading IT Services Company**.
- Impressive track record: from **€18.6m** in **1999** to **€705.6m** revenue in **2015**. The revenue in **Q1 2016** was **€186.3m**, **+10.1%** compared with **Q1 2015**.
- Constant **two digit Ebit** growth.
- More than **5.300 employees** distributed across a network of specialized companies.
- Large customers**, with a very **high customer retention**.

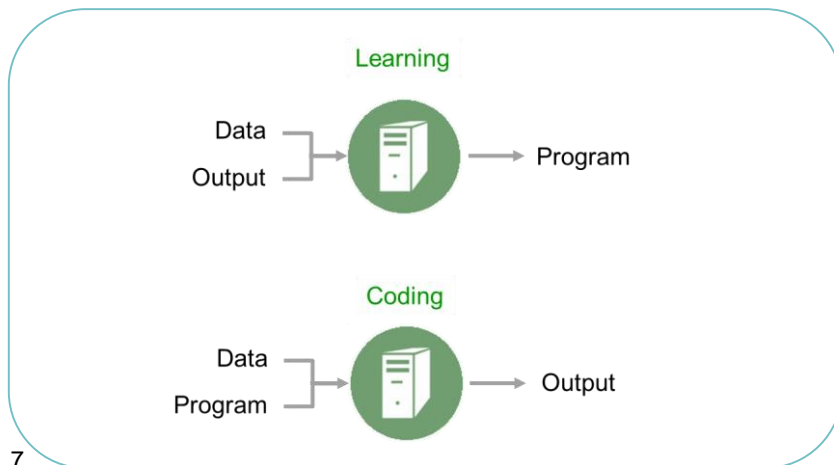
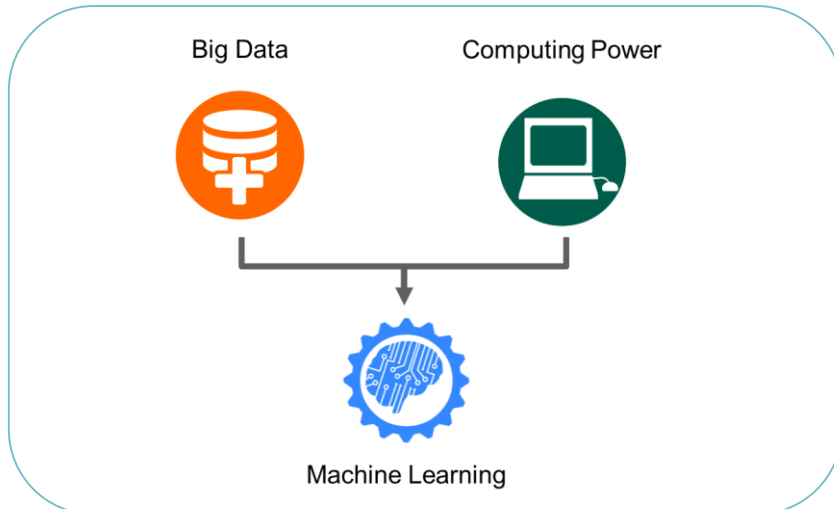


Agenda



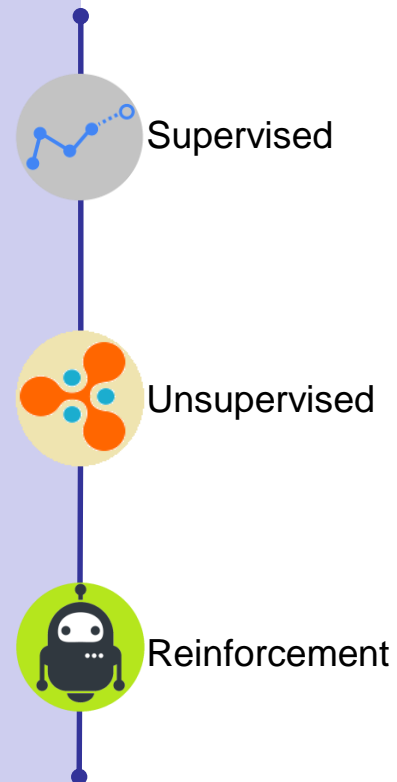
- Reply Group
- **Machine Learning**
- Applications
- Healthcare

What is **MACHINE LEARNING** ?



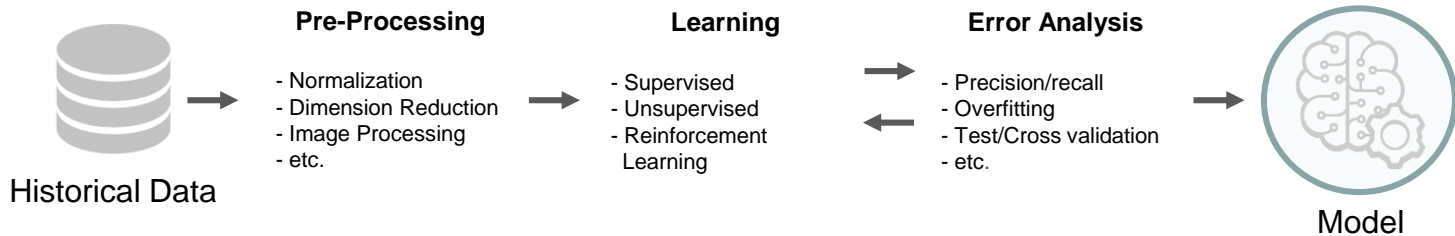
Machine Learning is a scientific discipline that deals with the construction and study of algorithms that can **learn from data**.

Such algorithms operate by **building a model** based on inputs and using that to **make predictions or decisions**, rather than following only explicitly programmed instructions.

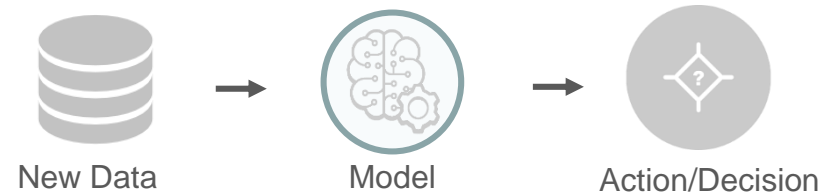


How **IT WORKS**

LEARNING



PREDICTION

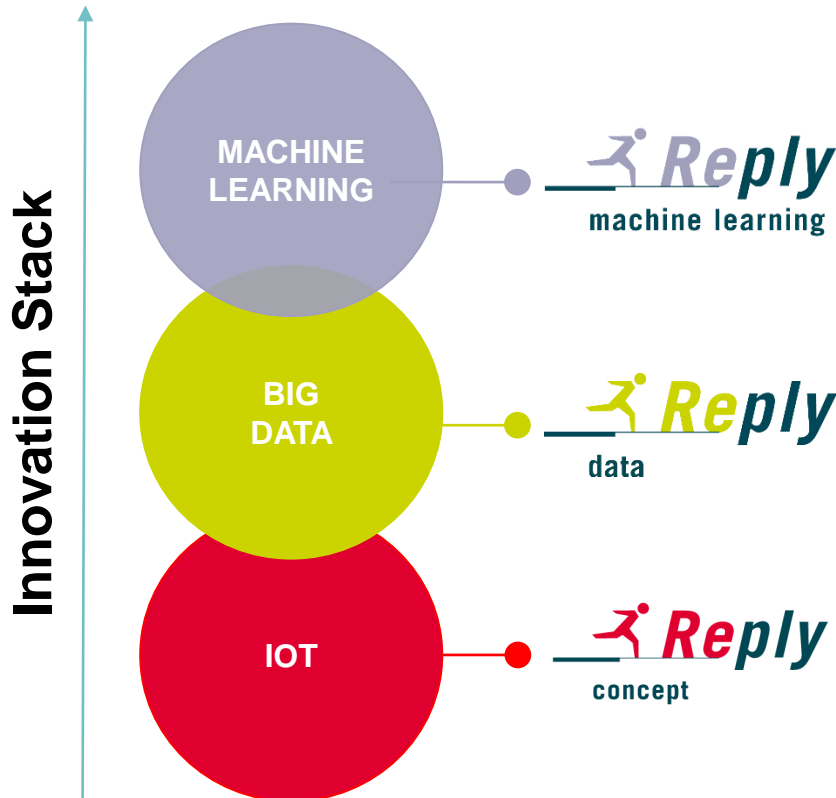


Agenda



- Reply Group
- Machine Learning
- **Applications**
- Healthcare

Machine Learning **REPLY**

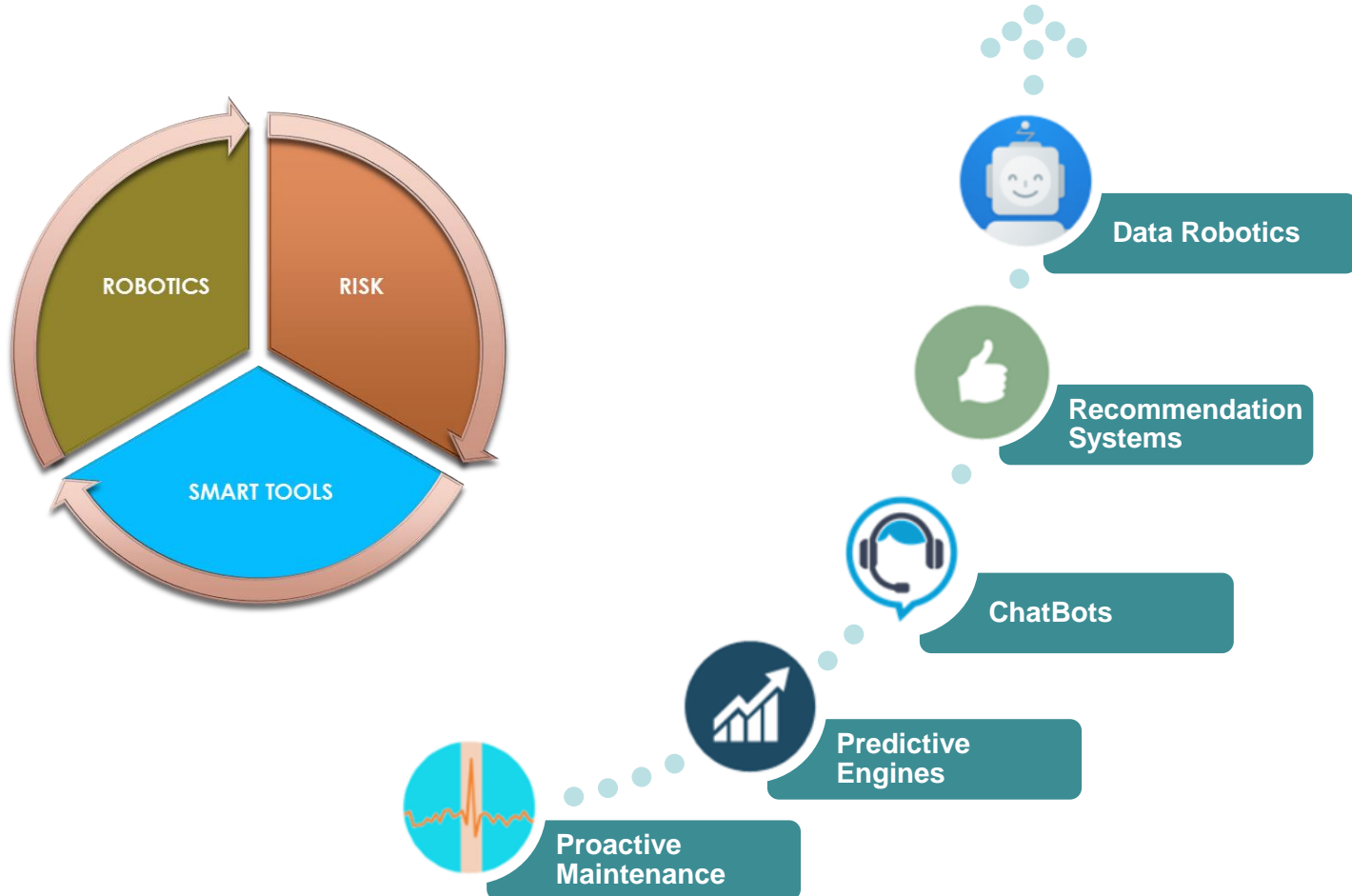


REPLY strategic approach requires to move from a **focus on the objects** to an approach that considers the **overall integration** within a broader ecosystem

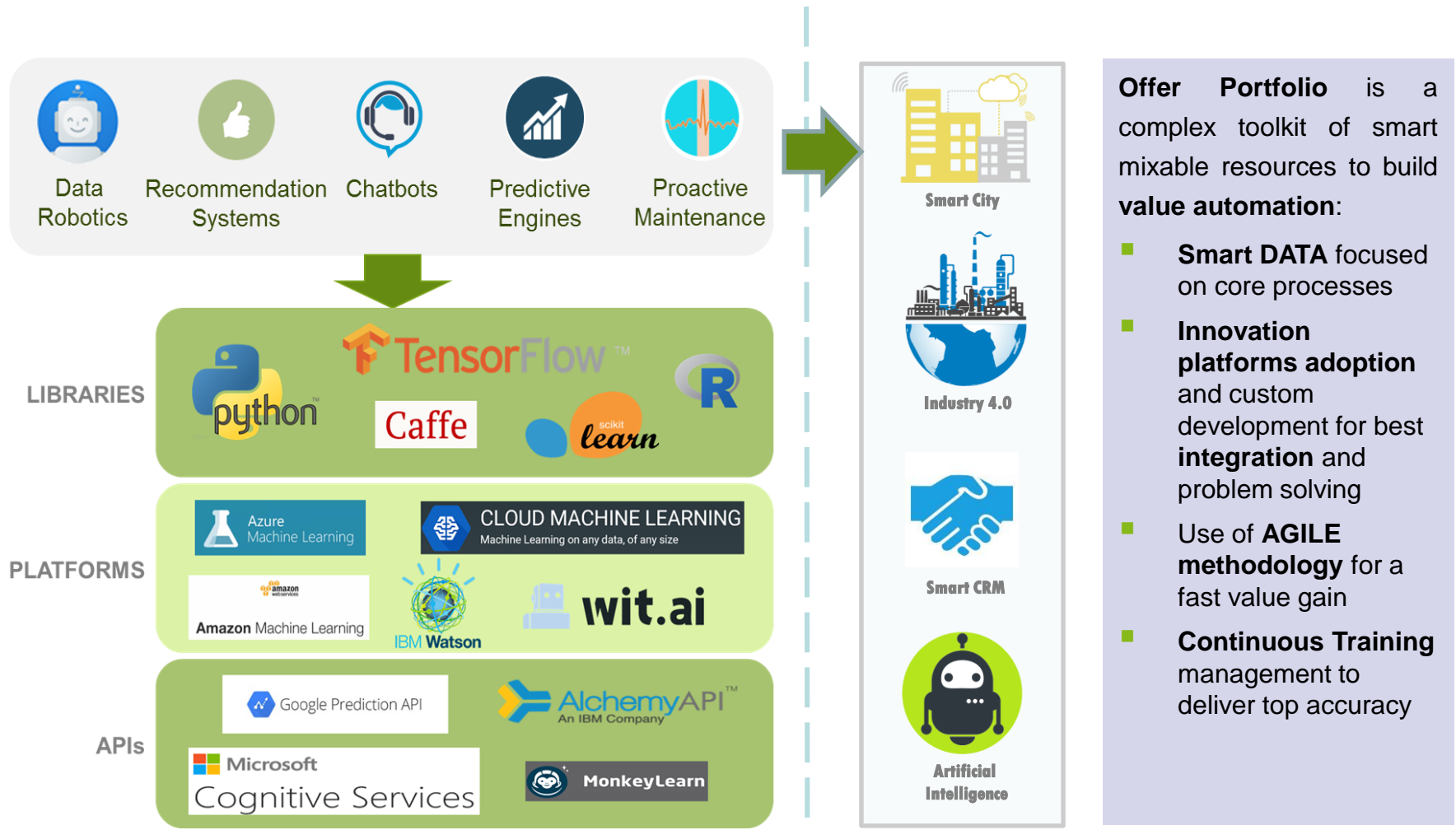
The whole **Innovation Stack** is covered by focused companies **retrieving value** at each step of the **process**:

- Specific **vertical capabilities** provided by each Reply Company
- **Innovation and experimentation** on IoT, Big Data and Machine Learning
- Developing of full stack **market vertical solutions**

Machine Learning **APPLICATIONS**



Technology & **PLATFORMS**



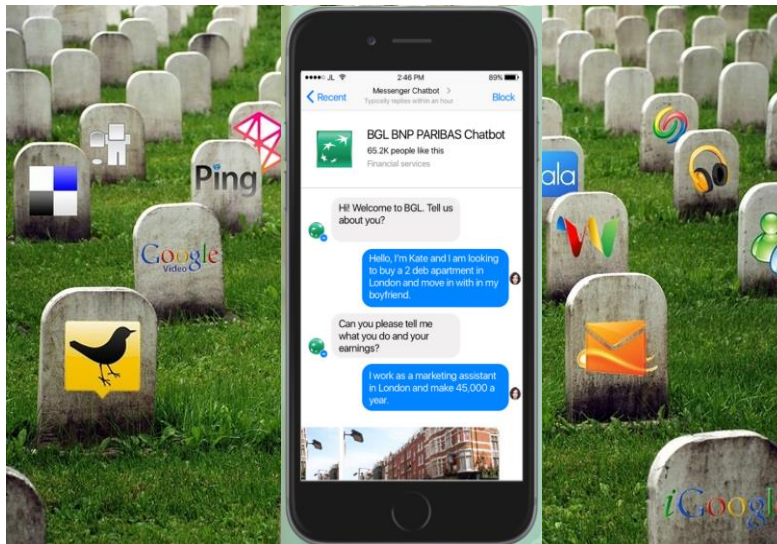
Agenda



- Reply Group
- Machine Learning
- Applications
- **Healthcare**



Smart Tools: **CHATBOTS**



- B2C**
 - Configurator
 - Fidelity
 - Customer Support
- B2B**
 - Smart Sales CB
 - Customer Support
- OLD FASHION**
 - Transactional Apps

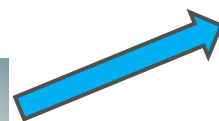
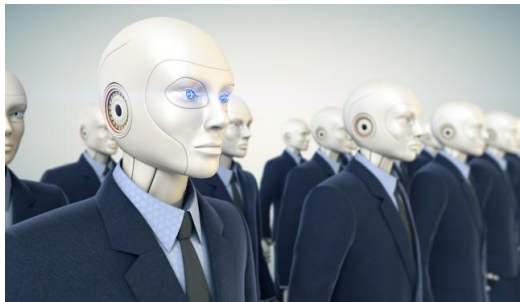
Healthcare

- Patient experience improvement
- Advanced Booking
- Medical and prevention information
- Customer first aid support
- ...





Smart Tools: **DATA ROBOTICS**



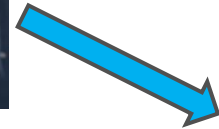
CUSTOM

- RECOMMENDATION ENGINES
- PREDICTIVE ENGINES
- PRESCRIPTIVE ANALYTICS



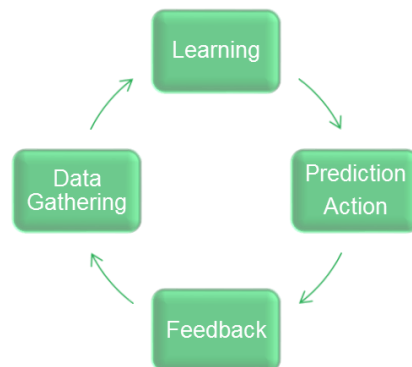
PLATFORM

- OCR
- INVOICE MATCHING
- ORDERS GATHERING



LANGUAGE

- NARRATIVE BI
- TEXT MINING



Continuous Learning:

- Adjusts to time
- Improves accuracy



Smart Tools: **DATA ROBOTICS II**

Finance & Banking

- New account verification
- Data validation
- Customer account management
- Financial claims processing
- Report creation
- Form filling
- Change of address
- Loan application processing

Insurance

- Emissione
- Riconciliazione incassi/emessi
- Antifrode
- Apertura e liquidazione sinistri
- Carrozzerie convenzionate
- Recupero crediti
- Analisi polizze non standard

Telecommunications

- Collection & consolidate customer data from client phone systems
- Backing up information from client systems
- Uploading data
- Transferring customer data between applications
- Extracting data about competitor pricing

Retail

- Automatically updating online inventory & product information
- Importing website orders and email sales into back-end systems

Government

- Verification process
- Populating forms and assigning sub-contractors to jobs
- Integrating legacy systems with newer systems

Finance/Accounting

- Invoice processing
- Accounts payable and accounts receivables
- Reporting
- Bank reconciliation
- Fixed assets analysis
- Master data management
- Vendor and customer account creation
- ERP logging from another system

Healthcare

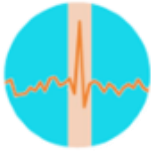
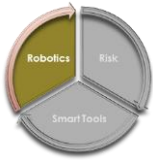
- Patient data migration and processing
- Reporting for doctors
- Medical bill processing
- Patient record storage

IT

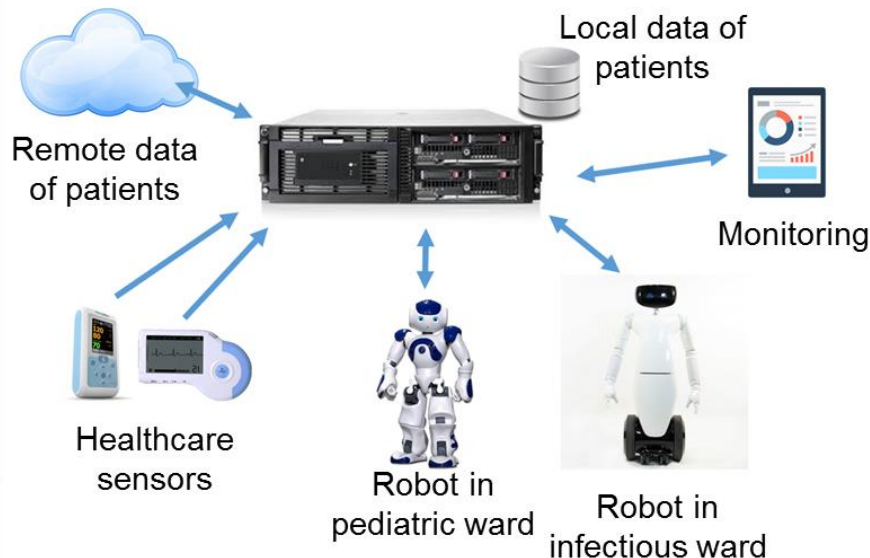
- Creating new accounts
- Software installations and updates
- Batch processing
- Printer set-ups

HR

- Employee on-boarding
- Leave of absence management
- Populating employee data into multiple systems
- Performance appraisal management

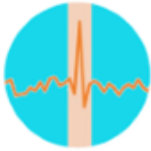
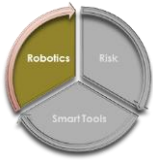


Robotics: **PERSONAL ROBOTS**



Robotics has an important role in Healthcare, adopting a robotic solution is possible to:

- **24x7 service** to support patients even in dangerous wards (for example infectious patients);
- **be a remote worker** controlled by humans;
- **integrate robots in a complex environment** in order to act according data like sensors on patients, their diagnosis and other information stored in a common storage.



Robotics: **PERSONAL ROBOTS II**



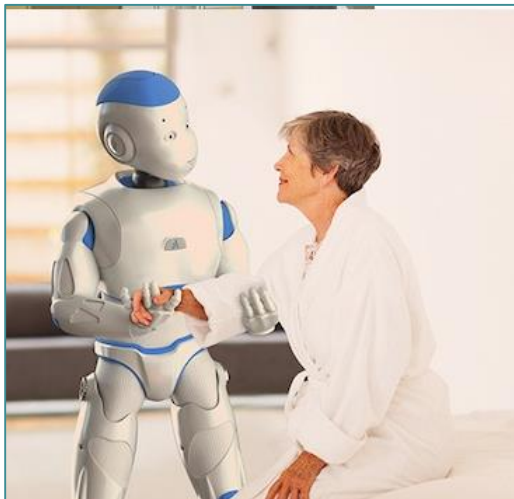
Senior people assistance



Play children to improve communication capability.



Act in dangerous wards

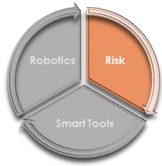


Support injured people

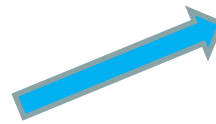
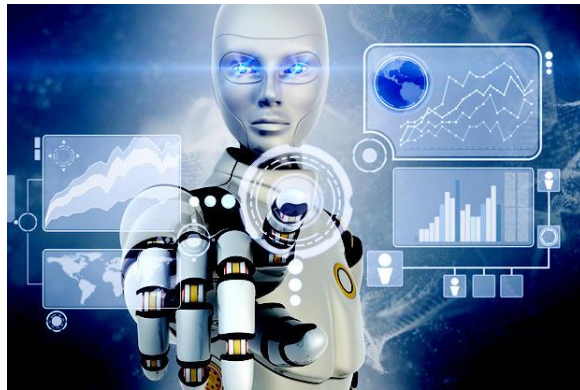
Robots are **connected** to a complex framework to **share information and act** when specific event happens (i.e. sensors identify a **critical situation for patients**) or when specific activities have to be performed (i.e. **meal transport**).



Transport patient meals, medical supplies, medical linens and trash.



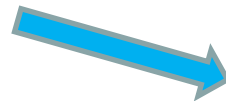
Risk: **PREDICTIVE ENGINES**



FINANCE - DVA TOOL



HEALTH - CLINIC RISK



INSURANCE - FRAUD

PEDIATRIA



CRONICITÀ



TERZA ETÀ



OSPEDALE ESTESO





Risk: **PREDICTIVE ENGINES II**

Data Gathering



Clinic
Data



Weather



Medical
Models



Region
Information



Calendar and
Holidays

Daily, Weekly, Monthly,
Seasonal, Yearly

Rain, Fog, Snow,
Thunderstorm, Hail

Location, Dimension,
Pathology, Cure suggestion

Geographical Location
Population Density, Area

Week days, Weekend,
Holidays

Data Modeling



Data Integration



Data Cleaning



Data Exploration



Time Series Modeling

How would feel
the patient in June, 2016?

Model



Thank you!



E-mail
c.alfieri@reply.it



Website
www.reply.eu